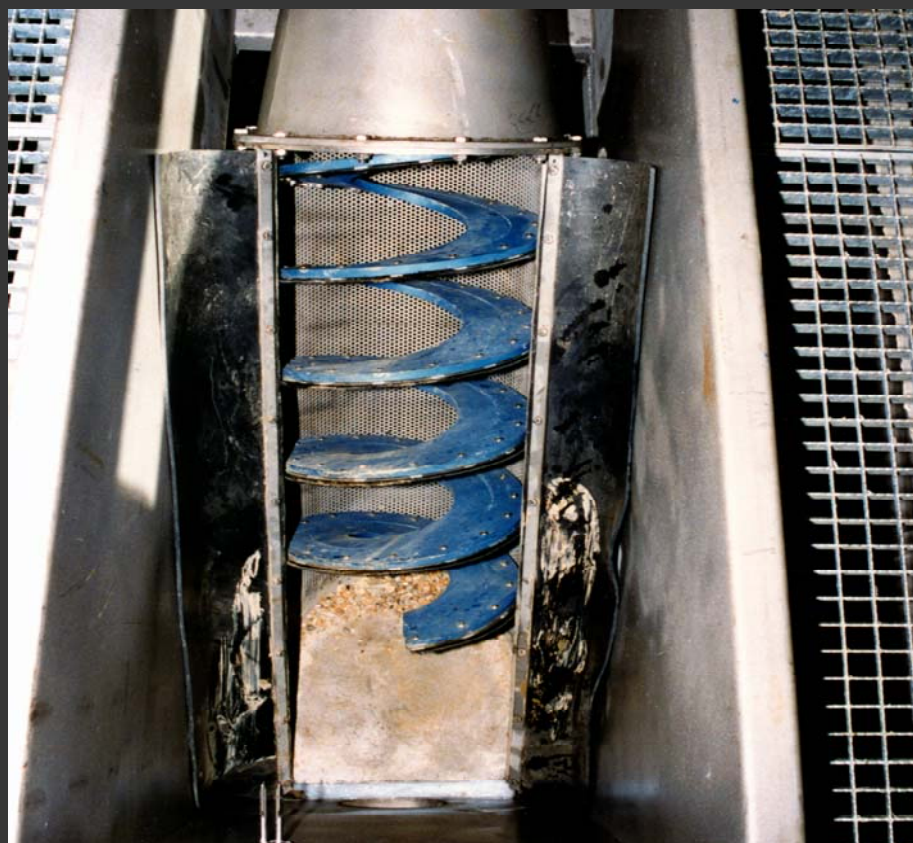
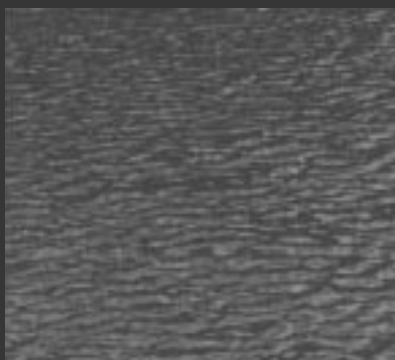


Spiral Sieve SSR



Function and performance

The spiral sieve SSR is equipped with a fully integrated screenings compactor. The construction is used for small and medium-sized sewage treatment plants as well as industrial firms up to a flow capacity of 60 l/s.

The range of application varies from indoor to outdoor installation. The construction can be adapted to channel widths from 300 to 600 mm.

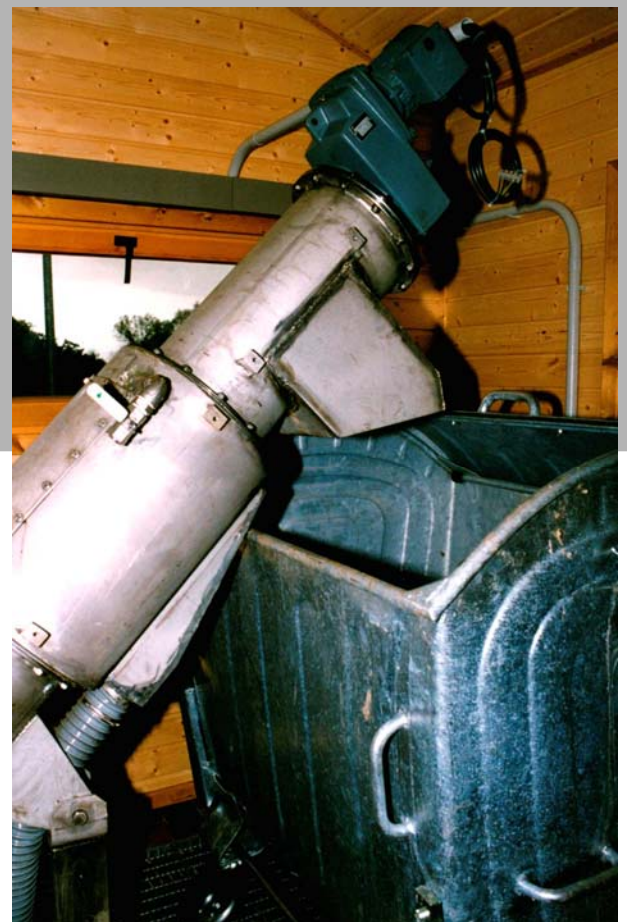
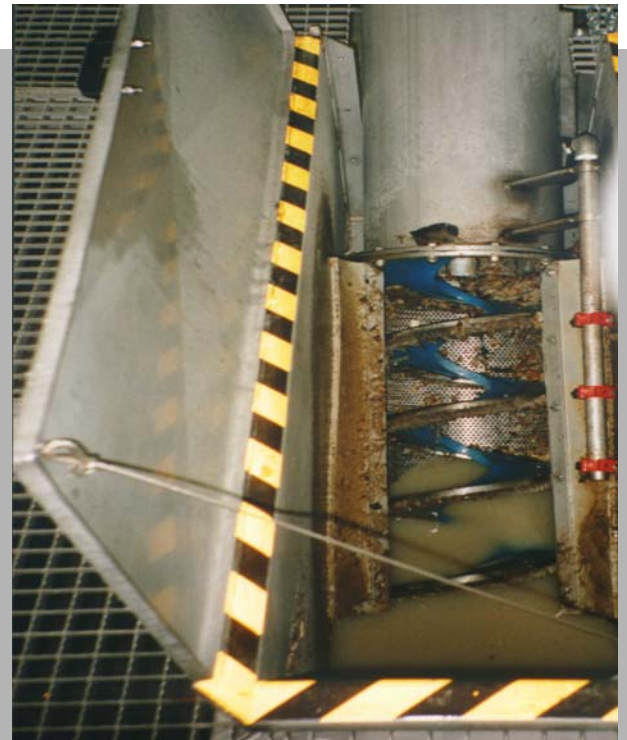
The mode of operation is simple but efficient. The waste water enters directly into the sieve basket where the solids are retained and collected. After reaching a certain water level inside the construction, the automatic level control sensor will start the shaftless spiral.

Thereby the screenings are transported to the compaction zone. During the dewatering process the press water flows through the conveying zone within the machine and afterwards back into the channel. The pressed solids are discharged into a container.

The complete frame construction is made of stainless steel. To provide a frictionless process, the shaftless spiral is made of special, flexible steel. The sieving zone consists of a perforated basket. The perforation is available from 3 mm - 5 mm.

Due to the easy handling of the sieve basket for maintenance, the sustainer for installation is rotatable designed. The compaction and dewatering zone is fitted with a dewatering sieve, pipe for washing, discharge nozzle and restrictors. All parts are surrounded of a press water tank.

The gear motor at the top is directly coupled. On top the shaftless spiral is a one-sided bearing. Due to this, a underwater bearing is avoided.

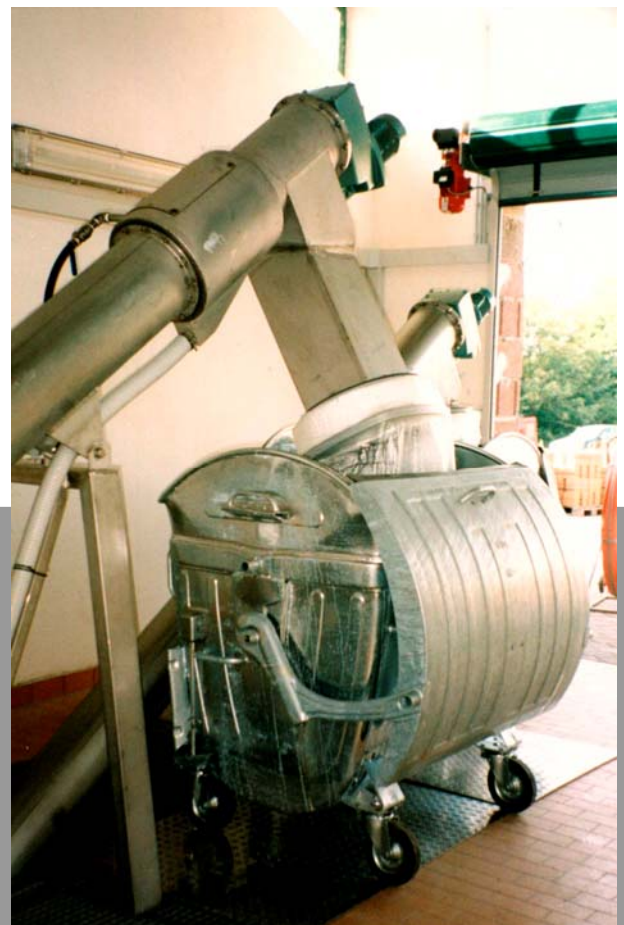
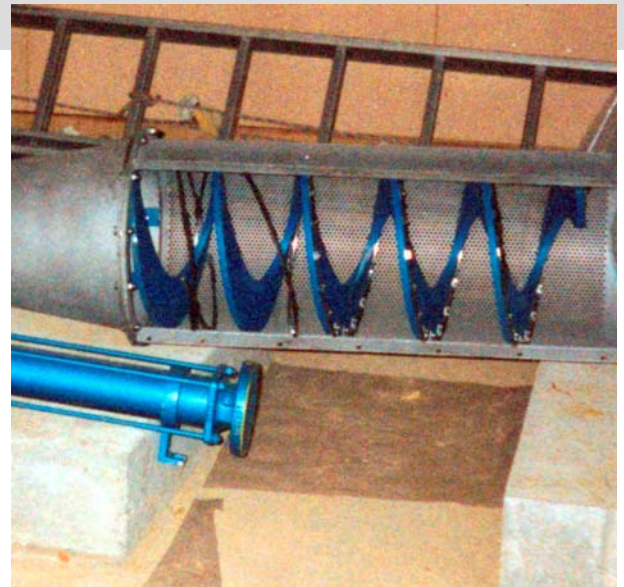


Operation and maintenance

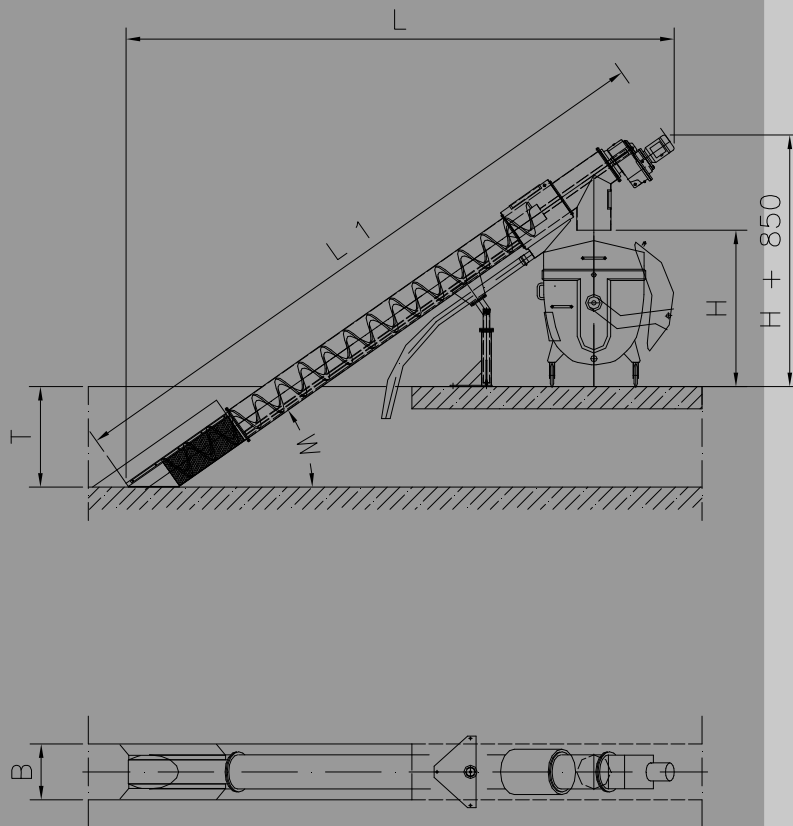
- automatically handling via water level control sensor and control panel
- Sieving surface is cleaned by special brushes
- Press zone is cleaned by an inying pipe
- At discharge extendable to bagging unit

Your advantages

- space saving due to 45° and 50° installation able
- Improvement of the succeeding treatment processes causes a lower energy consumption and low maintenance costs
- Self-cleaning of the sieving zone
- No bearing beneath the water level
- Integrated dewatering press
- Completely jacketing of the machine
- Optional hygienic package for the solids
- Optional heated construction for outdoor installation
- Optional automatically handling depending on water level
- Rotating mechanism for easy handling during erection and maintenance
- Adaptation to different channel widths and depths using modular system



Typical arrangement



Type	Channel width „B“	Basket dia.	Spiral dia.	Motor power	Inclination „W“
SSR 200	300 mm	206 mm	160 mm	0,75 kW	35°, 45°, 50°
SSR 300	400 mm	306 mm	215 mm	1,1 kW	35°, 45°, 50°
SSR 400	500 mm	406 mm	280 mm	1,5 kW	35°, 45°, 50°
SSR 500	600 mm	506 mm	365 mm	2,2 kW	35°, 45°, 50°

AAF ENVIROTEC GmbH
Lindenallee 47
D-45127 Essen
Germany

Tel.: ++49 (0)201 / 317 30
Fax: ++49(0)201 / 317 36

info@aaf-envirotec.com
www.aaf-envirotec.com