

PowerMix

Side Entry Mixer POPTR-I for installation in:

- Digesters
- Combined storage/post digester tanks
- Covered sludge and manure storage tanks
- Equalization basins



Close coupled mixer with unique sealing system:

- two mechanical seals
- unique sealing system protecting mechanical seals against surrounding media
- exterior oil control
- exterior lubrication system



Installation in steel or concrete tanks.
All submersed parts in stainless steel.
ATEX-Certification for zones requiring explosion proof units.



MORE EFFICIENCY

LESS ENERGY CONSUMPTION

LOW LIFE CYCLE COST

Quality in every detail

Side Entry Mixer POPTR-I

■ Performance and specifications:

Mixer Sizes from 5,5 to 18,5 kW – Propellers with 300 rpm.
Mixer Performances up to 6650 m³/h.

■ Motor:

3-phase AC motor, 50 Hz Voltage: 400V.

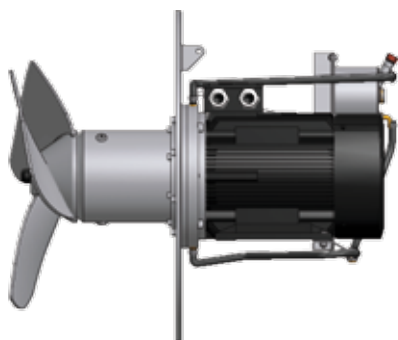
All specifications and performance data are applicable for water.
Different propeller types can be supplied suitable for the medium in question.
Other motor/propeller combinations are possible.

■ Materials:

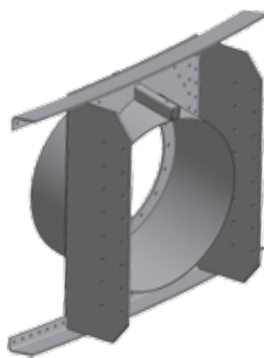
Motor housing: cast iron AISI A48-40B
Oil and gear chamber: stainless steel Aisi 316
Propeller: stainless steel Aisi 304
Gear shaft: steel (AISI 9840), protected against medium.

■ The following information should be given with each inquiry:

- purpose of application
- dimensions of silo/tank
- type of liquid
- dry matter content
- temperature
- expected working periods/-intervals



POPTR-I



flange for installation
in steel tank



flange for installation
in concrete tank

The text and technical data given may not be reproduced partly or completely without permission from Landia A/S.
We reserve the right to make technical alterations. AL00B.C15-150611

Landia A/S
Industrivej 2
DK-6940 Lem St.
Tel.: +45 97 34 12 44
Fax: +45 97 34 16 98
e-mail: info@landia.dk
www.landia.dk

Landia[®]

LANDIA A/S
DENMARK
ISO 9001